

# Black and White to Colour Photo Trick

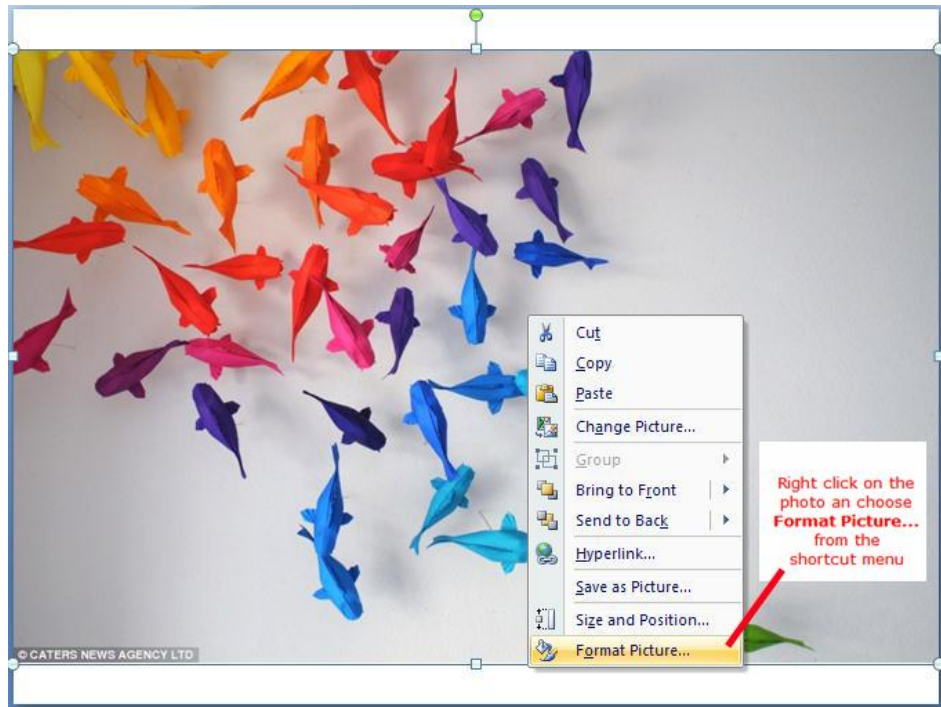
---

Most people have seen the movie *The Wizard of Oz*. Do you remember that the movie began in black and white and once Dorothy stepped out of her house in Oz, everything was in glorious colour? Well you too, can achieve this effect in your PowerPoint presentations.

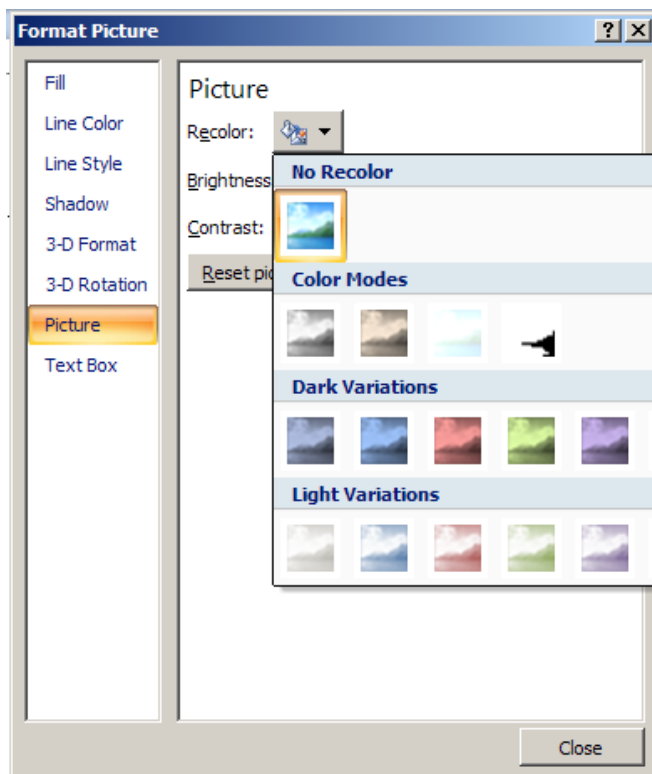


1. Choose Insert > Picture > From File
2. Locate the colour picture on your computer and click the OK button to insert it.
3. Resize the picture if necessary, on the slide.
4. Click slide to select it.
5. On Home ribbon, click New slide > Duplicate Selected Slide to duplicate it. Both slides should now show in the *Slides / Outline* pane on the left side of the screen.

## Format the Picture in PowerPoint



1. Right click on the first picture.
2. Choose **Format Picture...** from the shortcut menu.



### Format as Greyscale

1. In the section called *Picture*, click the drop down arrow beside **Recolor**.
2. Choose **Greyscale** from the Colour Modes list.
3. Click **Close**.

## What is the Difference between Greyscale and Black and White?

Since we are starting with a colour photo, we must convert it to a black and white format to use in the presentation. The resultant presentation will show a photo changing from black and white to colour, as if by magic.

To get the picture we want, we will convert the photo to *Greyscale*. Why, you might ask, will you not choose the option *Black & White* rather than *Greyscale* when converting from a colour picture?

- *Black & White* makes the photo exactly that -- a stark black and white photo, with no variety of the lighter tones of gray. This is not a true picture, at least for our purposes.
- *Greyscale* offers what the average person would call a black and white photo -- complete with all the variations of gray added in.

## The Picture is Converted to Greyscale



In the *Slides / Outline* pane on the left, you will see both versions of the same picture -- the first in greyscale and the second in colour.

## Add a Slide Transition to Change from One Picture to the Next

Adding a slide transition to the black and white slide will make the change to the colour slide to appear seamlessly.



1. Make sure the greyscale picture is active.
2. From Animations ribbon, change Advance slide to Automatically after 1 sec. Remove tick for On Click.
3. Make sure the colour picture is selected.
4. From Animations ribbon, select *Fade Smoothly* or *Dissolve* transition from the group Transitions to this slide.
5. Change the speed of the transition to **Slow**.

**Note** - You may also wish to add a slide transition to the first slide (the greyscale slide) as well.

## View the Colour Trick

View the slide show to test out the colour conversion of your photo from black and white to colour.

- Press the **F5** key on the keyboard to view the show.
- Press the **Esc** key to end the slide show at any time.