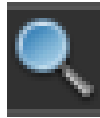


Zoom Tool



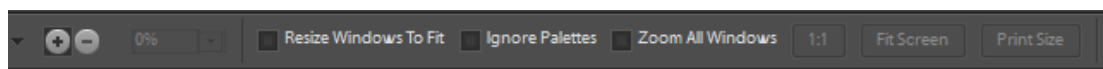
Used to change the image's magnification. It is used to increase or decrease the magnification of the image by a preset amount.

The change will be centred on the spot clicked. Repeated clicking will continue to increase or decrease the magnification. If you reach the maximum amount available, the centre of the zoom tool's cursor will appear empty.

To **temporarily access the zoom tool** while using other tools, **press Ctrl-spacebar to zoom in** (increase magnification), or Alt-Spacebar to zoom out.

Useful tip: You can **drag a selection rectangle** with the zoom tool, and that part only of the image will be magnified to fill the screen. This is my **preferred way** of zooming because you have better control of the exact area that you wish magnified.

Options Bar for Zoom Tool

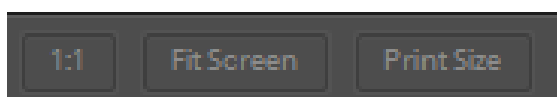


Plus or Minus. Click on plus icon (+) to zoom in. Click minus icon (-) to zoom out.

Resize Windows to Fit when selected, the image window will resize along with the image as you make it larger or smaller.

Ignore Palettes when selected will allow the magnified image to expand under any open palettes. You'll need to press the Tab key to make your palettes disappear if you want to see those parts of your image. Press Tab-Shift to make the palettes disappear, but leave the toolbar. Press Tab again to bring them all back.

The three buttons on the right end of the options bar give you other magnification options.



Actual Pixels will zoom to 1:1 (actual size)

Fit on Screen will zoom the current image's window to screen size. This option is the one that you will most probably use the most often. Keyboard shortcut for Fit on Screen is Ctrl+0 (digit zero NOT letter O)

Print Size will zoom window to printing resolution (e.g. if resolution is 300 dpi, then the image will appear larger because the printer is expecting to print the same image at a higher resolution than the screen can manage)

Reset options: If you have doodled with a tool's options and want to get back to the default settings, click that tool's icon at the far left end of its options bar. Choose either Reset Tool to reset only the current tool, or Reset All Tools to restore default settings to every tool.